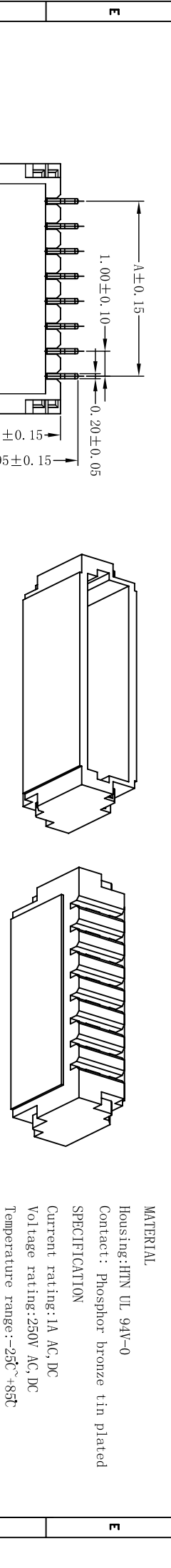
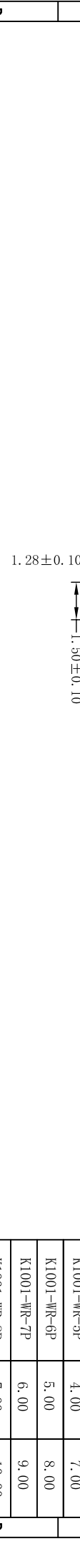
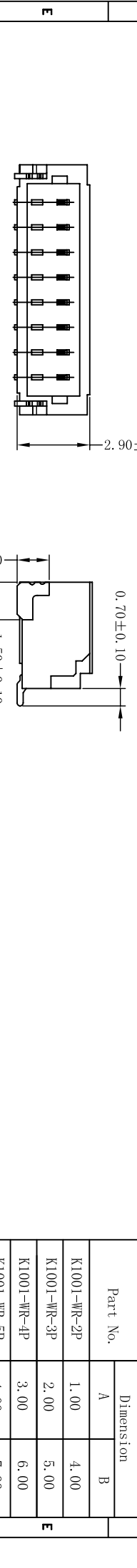


14	13	12	11	10	9	8	7	6	5	4	3	2	1		
											REV.	ECO NO.	DATE	SIGN	DESCRIPTION
											A		2007/07/27		RELEASED



MATERIAL
Housing: HTN UL 94V-0
Contact: Phosphor bronze tin plated
SPECIFICATION
Current rating: 1A AC, DC
Voltage rating: 250V AC, DC
Temperature range: -25°C +85°C
Contact resistance: 20mΩ Max.
Insulation resistance: 1000MΩ Min.
Withstanding voltage: 1000V AC/minute



Recommended P.C.B Layout

A	B	C	D	E	F
----------	----------	----------	----------	----------	----------

Ordering Information & Dimensions:

Part No.	Dimension	
	A	B
K1001-WR-2P	1.00	4.00
K1001-WR-3P	2.00	5.00
K1001-WR-4P	3.00	6.00
K1001-WR-5P	4.00	7.00
K1001-WR-6P	5.00	8.00
K1001-WR-7P	6.00	9.00
K1001-WR-8P	7.00	10.00
K1001-WR-9P	8.00	11.00
K1001-WR-10P	9.00	12.00
K1001-WR-11P	10.00	13.00
K1001-WR-12P	11.00	14.00
K1001-WR-13P	12.00	15.00
K1001-WR-14P	13.00	16.00
K1001-WR-15P	14.00	17.00
K1001-WR-16P	15.00	18.00
K1001-WR-17P	16.00	19.00
K1001-WR-18P	17.00	20.00
K1001-WR-19P	18.00	21.00
K1001-WR-20P	19.00	22.00

深圳亿沃鑫科有限公司
TEL: +86 135-901-78542
FAX: +86-755-32932856
www.ewconn.com

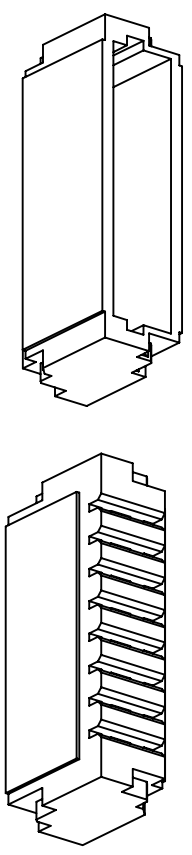
TOLERANCE UNLESS SPECIFIED		DATE	DAR. BY	C L H	MATERIAL
LINEAR	ANGLE	07.10.06			
±0.30	X° XX	SCALE	CHK. BY	H D J	FINISH
±0.20	X° XX	1/1	APP. BY	H D J	PART NO.
XX ± 0.10	.XX° XX	UNIT			
		mm			

EWCONNECTOR **深圳亿沃鑫科有限公司**

TITLE: 1.0MM-Wafer-90度
DWG. NO. EW1001-WR-XXP

本部品不含有环境管理物质规定之有害物质 [MANAGEMENT REGULATIONS FOR THE RESTRICTIVELY-USED SUBSTANCES INCLUDED IN PARTS AND DEVICES]

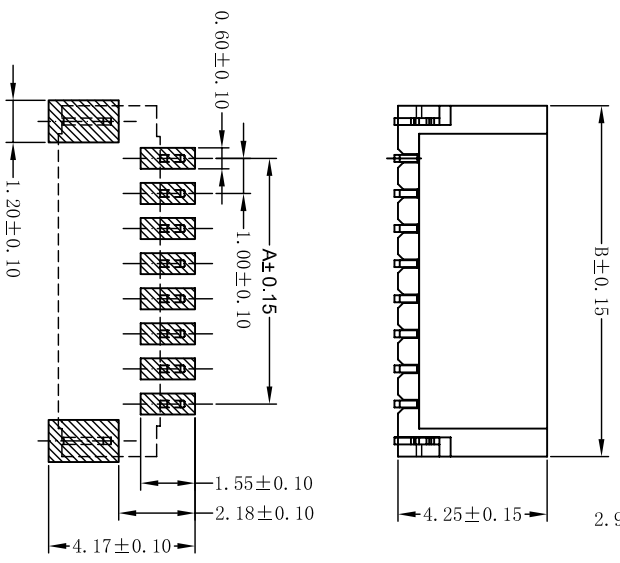
REV.	ECO NO.	DATE	SIGN	DESCRIPTION
A		2007/07/27		RELEASED



MATERIAL
Housing:HTN UL 94V-0
Contact: Phosphor bronze tin plated
SPECIFICATION
Current rating:1A AC, DC
Voltage rating:250V AC, DC
Temperature range:-25°C~+85°C
Contact resistance:20mΩ Max.
Insulation resistance:1000MΩ Min.
Withstanding voltage:1000V AC/minute

Ordering Information & Dimensions:

Part No.	Dimension	
	A	B
K1001-WV-2P	1.00	4.00
K1001-WV-3P	2.00	5.00
K1001-WV-4P	3.00	6.00
K1001-WV-5P	4.00	7.00
K1001-WV-6P	5.00	8.00
K1001-WV-7P	6.00	9.00
K1001-WV-8P	7.00	10.00
K1001-WV-9P	8.00	11.00
K1001-WV-10P	9.00	12.00
K1001-WV-11P	10.00	13.00
K1001-WV-12P	11.00	14.00
K1001-WV-13P	12.00	15.00
K1001-WV-14P	13.00	16.00
K1001-WV-15P	14.00	17.00
K1001-WV-16P	15.00	18.00
K1001-WV-17P	16.00	19.00
K1001-WV-18P	17.00	20.00
K1001-WV-19P	18.00	21.00
K1001-WV-20P	19.00	22.00



Recommended P. C. B Layout

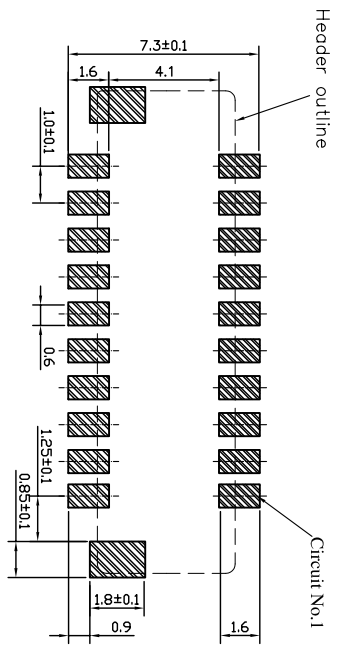
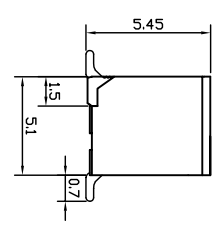
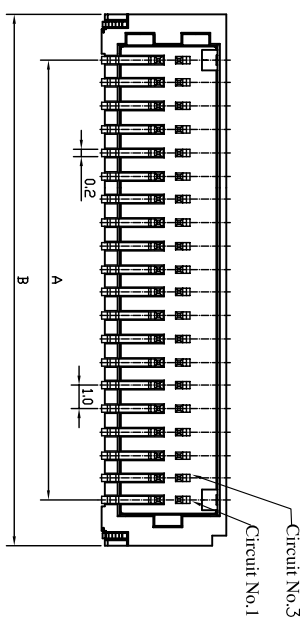
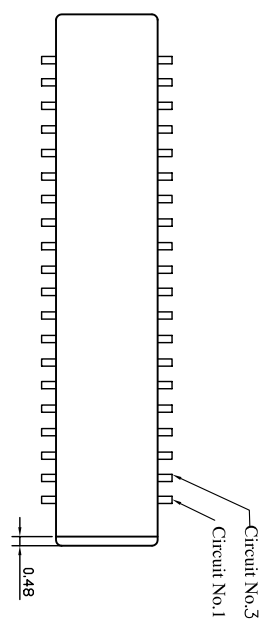
一沃电子实业有限公司
TEL:+86-755-32932856
FAX:+86-755-36887541
http://www.ewconn.com

TOLERANCE UNLESS SPECIFIED		DATE	DAR. BY	C L H	MATERIAL
LINER	ANGLE	07.01.06			
X. ±0.30	X° XX	SCALE	CHK. BY	H D J	FINISH
.XX ±0.20	.X° XX	1/1	APP. BY	H D J	PART NO.
.XXX ±0.10	.XX° XX	UNIT			
		mm			

EWCONNECTR E-World Electronic Industry Ltd

TITLE: 1.0MM-Water-180度
DWG NO. EW1001-WV-XXP

14	13	12	11	10	9	8	7	6	5	4	3	2	1	
										REV.	ECO NO.	DATE	SIGN	DESCRIPTION
										A		2007/07/27		RELEASED



RECOMMENDED P.C. BOARD PATTERN DIM.

Part No.	Dimension mm (in.)	
	A	B
2*10	9.0	13.1
2*15	14.0	18.1
2*20	19.0	23.1
2*25	24.0	28.1

MATERIAL
Housing: HTN UL 94V-0
Contact: Phosphor bronze tin plated
SPECIFICATION
Current rating: 1A AC, DC
Voltage rating: 250V AC, DC
Temperature range: -25°C ~ +85°C
Contact resistance: 20mΩ Max.
Insulation resistance: 1000MΩ Min.
Withstanding voltage: 1000V AC/minute

EWCONNECTOR
TEL: +86-755-32932856
FAX: +86-755-22142154
http://www.ewconn.com

TOLERANCE UNLESS SPECIFIED		DATE 07.01.06		DAR. BY		C L H		MATERIAL	
LINEAR	ANGLE	SCALE 1/1	CHK. BY	H D J	UNIT mm	APP. BY	H D J	PART NO.	
X ±0.30	X° XX								
XX ±0.20	X° XX								
XXX ±0.10	.XX° XX								

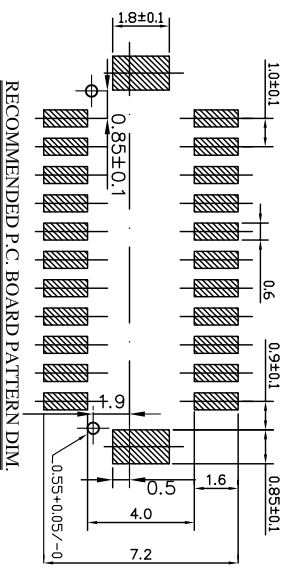
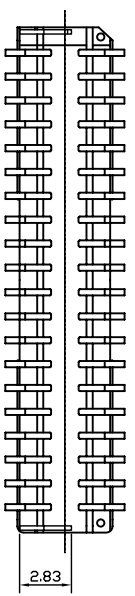
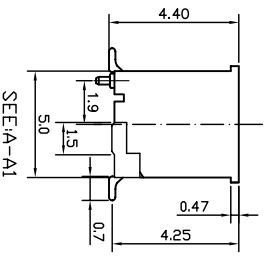
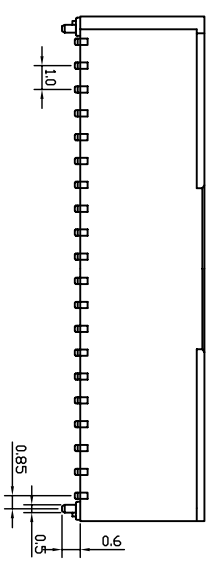
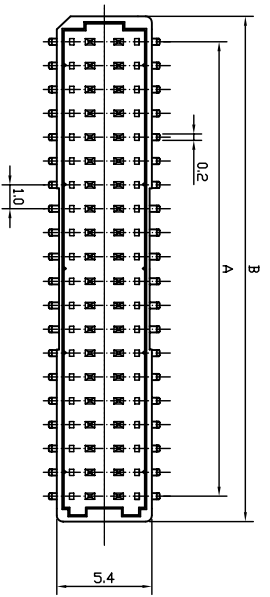
EWCONNECTOR E-World Electronic Industry Ltd

TITLE: JST1.0mm Water SMT 90° 双排系列
DWG NO. EW1002-WR-XXP

REV. A

本部品不含有环境管理物质规定之有害物质 [MANAGEMENT REGULATIONS FOR THE RESTRICTIVELY-USED SUBSTANCES INCLUDED IN PARTS AND DEVICES]

14	13	12	11	10	9	8	7	6	5	4	3	2	1
REV.	ECO NO.	DATE	SIGN	DESCRIPTION									
A		2007/07/27		RELEASED									



RECOMMENDED P.C. BOARD PATTERN DIM.

Part No.	Dimension mm (in.)	
	A	B
2*10	9.0(.354)	12.3(.484)
2*15	14.0(.551)	17.3(.681)
2*20	19.0(.748)	22.3(.878)
2*25	24.0(.945)	27.3(1.075)

MATERIAL
Housing:HTN UL 94V-0
Contact:Phosphor bronze tin plated

SPECIFICATION
Current rating:1A AC,DC
Voltage rating:250V AC,DC
Temperature:range:-25C~+85C
Contact resistance:20mΩ Max.
Insulation resistance:1000MΩ Min.
Withstanding voltage:1000V AC/minute

EWCONNECTOR
TEL:+86-755-32932856
FAX:+86-755-22142154
http://www.ewconn.com

TOLERANCE UNLESS SPECIFIED		DATE 07.01.06	DAR. BY	C L H	MATERIAL
LINEAR	ANGLE	SCALE 1/1	CHK. BY	H D J	FINISH
X ±0.30	X° XX	UNIT mm	APP. BY	H D J	PART NO.
XX ±0.20	X° XX				
XXX ±0.10	XX° XX				

EWCONNECTOR E-World Electronic Industry Ltd

TITLE: JST1.0mm Water SMT 180° 双排系列
DWG NO. K1002-WV-XXP

本部品不含有环境管理物质规定之有害物质 [MANAGEMENT REGULATIONS FOR THE RESTRICTIVELY-USED SUBSTANCES INCLUDED IN PARTS AND DEVICES]