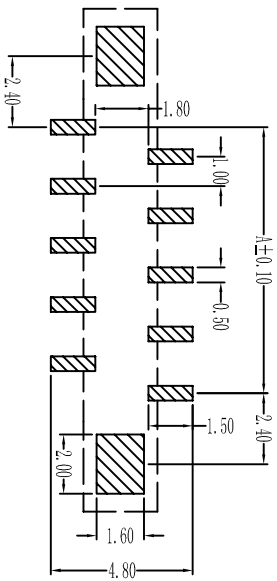
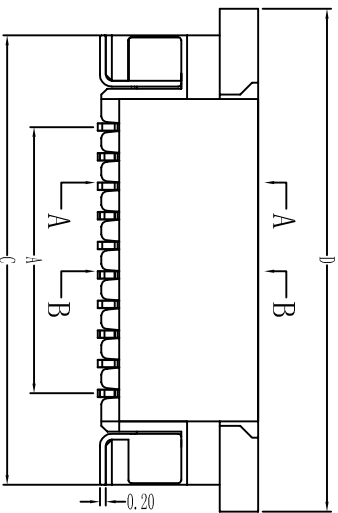
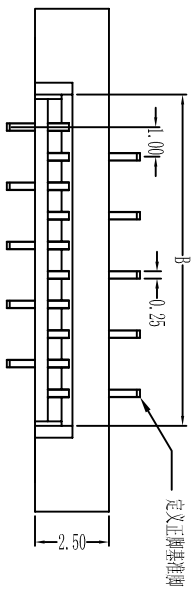
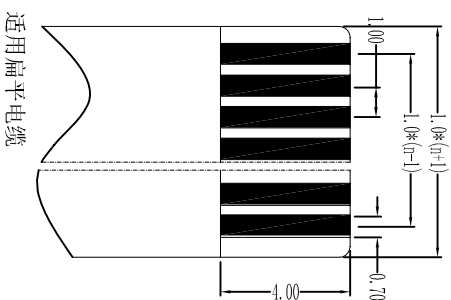
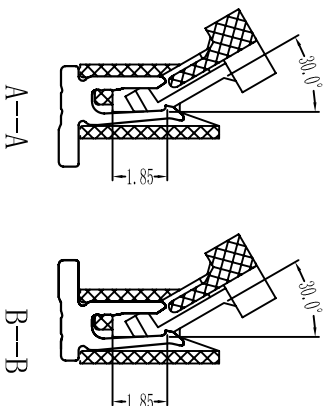
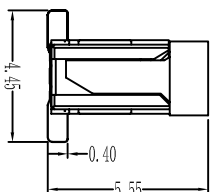


1.0mm PITCH FPC CONNECTORS



性能:

额定电流: 0.5A
 额定电压: 50V
 耐电压: 500V
 接触电阻: $\leq 20m\Omega$
 绝缘电阻: 8000Ω
 工作温度: $-20^{\circ}C \sim +85^{\circ}C$



适用扁平电缆

塑件 (材质): LCP, U94V-0
 锁扣 (材质): PA46, U94V-0
 插簧 (材质): 磷青铜, 镀锡/镀金
 焊片 (材质): 磷青铜, 镀锡/镀金

孔位	A	B	C	D
2	1	3.2	7.2	9
3	2	4.2	8.2	10
4	3	5.2	9.2	11
5	4	6.2	10.2	12
6	5	7.2	11.2	13
7	6	8.2	12.2	14
8	7	9.2	13.2	15
9	8	10.2	14.2	16
10	9	11.2	15.2	17
11	10	12.2	16.2	18
12	11	13.2	17.2	19
13	12	14.2	18.2	20
14	13	15.2	19.2	21
15	14	16.2	20.2	22
16	15	17.2	21.2	23
17	16	18.2	22.2	24
18	17	19.2	23.2	25
19	18	20.2	24.2	26
20	19	21.2	25.2	27
21	20	22.2	26.2	28
22	21	23.2	27.2	29
23	22	24.2	28.2	30
24	23	25.2	29.2	31
25	24	26.2	30.2	32
26	25	27.2	31.2	33
27	26	28.2	32.2	34
28	27	29.2	33.2	35
29	28	30.2	34.2	36
30	29	31.2	35.2	37
31	30	32.2	36.2	38
32	31	33.2	37.2	39
33	32	34.2	38.2	40
34	33	35.2	39.2	41
35	34	36.2	40.2	42

深圳亿沃鑫科有限公司
 TEL: +86135-901-78542
 FAX: +86-755-32932856
 www.ewconn.com

UNITS	mm
MAT'L	
FINISH	
Q'TY	

NAME (INTENDED USE)	EWCONNECTOR
1.0mm FPC (E型) 立贴式(有焊片正脚)	深圳亿沃鑫科有限公司
PART NO. (INTENDED USE)	FPC1036V
APPD:	DWG No.: 100K15-EUB0000000
CHKD:	SCALE 1/1
DRE:	SHEET 1/1
	REV. A